

Asia-Europe Foundation (ASEF) Education Department

Enhancing Connectivity between Asia &
Europe Through Education Opportunities



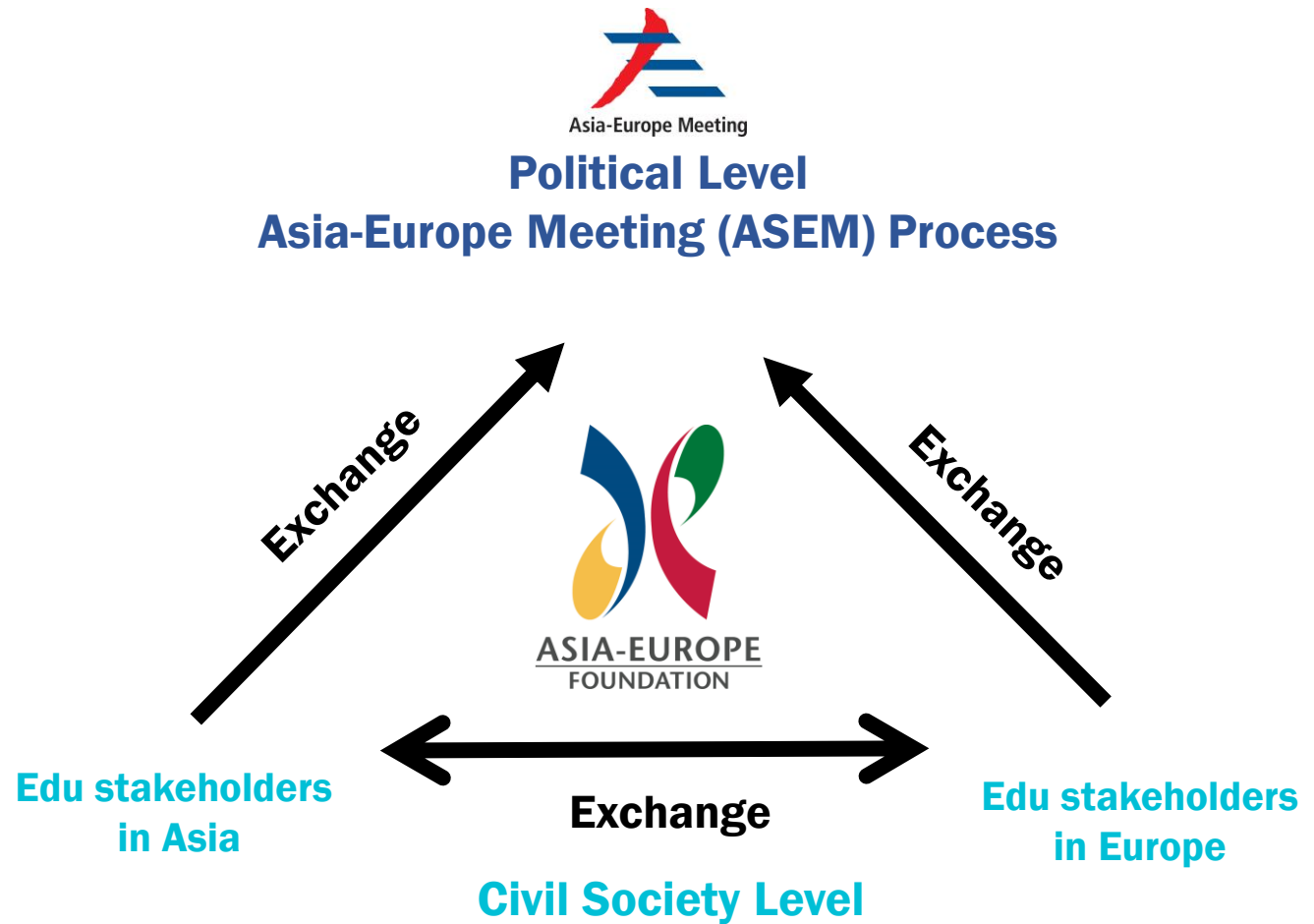
27 September 2023



ASEF

- Created in 1997, intergovernmental not-for-profit organisation based in Singapore
- The **only permanently established institution** of the Asia-Europe Meeting (ASEM) Process
- Funded by voluntary contributions from the 50 ASEM Partners
- **Facilitates** bi-regional dialogue, knowledge exchange and people-to-people connections
- **Connects** Civil Society & Governments across ASEM

ASEF's Mission



ASEF's Areas of Work





ASEF Member Countries

51 Member Countries

Asia: Australia, Bangladesh, Brunei Darussalam, Cambodia, China, India, Indonesia, Japan, Kazakhstan, Korea, Lao PDR, Malaysia, Mongolia, Myanmar, Pakistan, Philippines, Singapore, Thailand, and Viet Nam

Europe: Austria, Belgium, Bulgaria, Croatia, Cyprus, Czech Republic, Denmark, Estonia, Finland, France, Germany, Greece, Hungary, Ireland, Italy, Latvia, Lithuania, Luxembourg, Malta, Netherlands, New Zealand, Norway, Poland, Portugal, Romania, Russia, Slovakia, Slovenia, Spain, Sweden, Switzerland, and the United Kingdom

+ European Union, ASEAN Secretariat



ASEF Education Department

- **We connect:** youth, students, teachers & educators, higher education leaders, policy makers
- **We facilitate:** knowledge exchange, policy dialogues, capacity building, research & networks
- **We contribute to:** innovation in the formal & non-formal education sector & towards the SDGs of the UN Agenda2030
- **Our projects are:** often side events of high-level meetings of decision-makers



ASEFEdu's Target Groups

Young Leaders

- ASEF Young Leaders Summit (ASEFYLS)

Tertiary Education Stakeholders

- ASEF Regional Conference on Higher Education (ARC) (Official dialogue partner of the ASEM Education Ministers Meeting)
- ASEF Higher Education Innovation Laboratory (ASEFInnoLabs)

Secondary School Teachers

- ASEF Classroom Network Conference (ASEF ClassNet)

- Capacity Building Trainings
- Conferences and Summits
- Dialogues
- Research

Formats & Methodology

- **Capacity Building Trainings**
- Conferences and Summits
- Dialogues
- Research



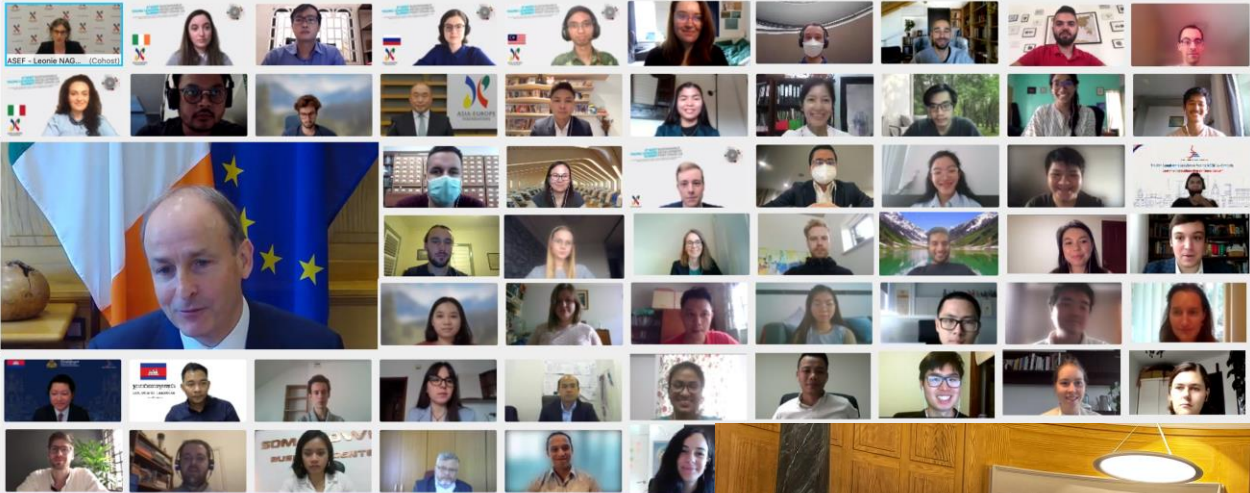
Formats & Methodology

- Capacity Building Trainings
- Conferences and Summits
- Dialogues
- Research



Formats & Methodology

- Capacity Building Trainings & Conferences
- Simulations
- Dialogues
- Research

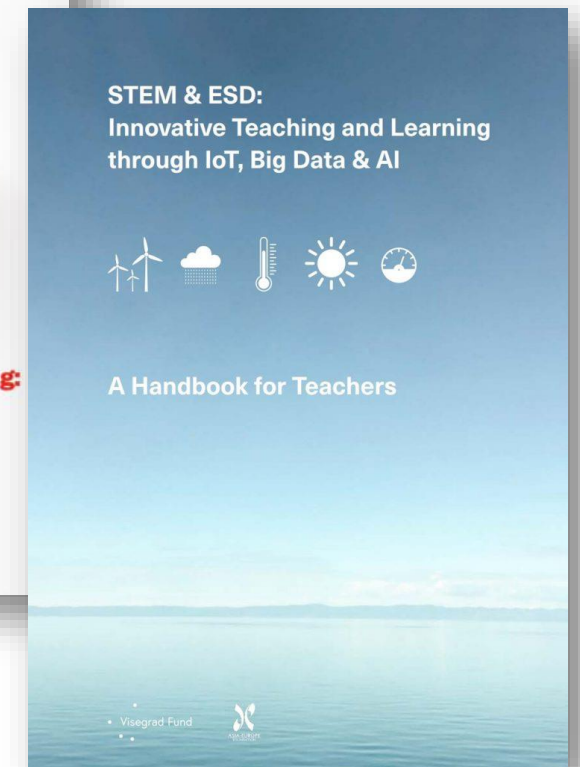
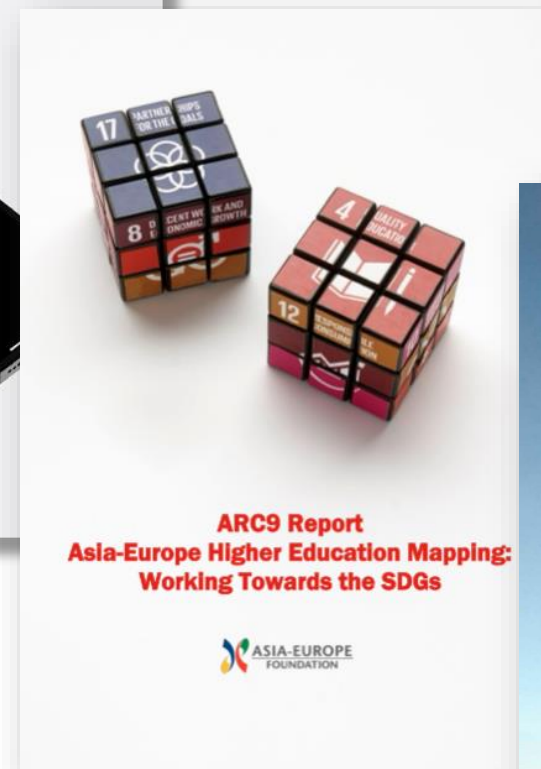
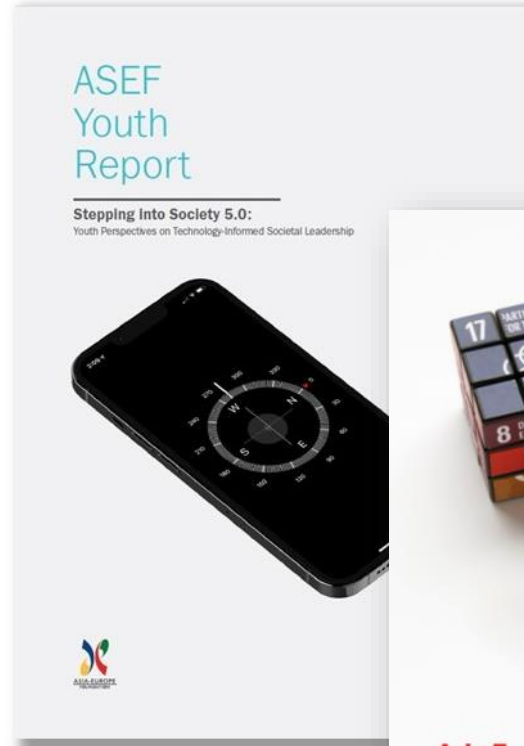


ASEF Youth Dialogue Series with ASEM Leaders
H.E. Mr. Micheál MARTIN
Taoiseach/Prime Minister of Ireland



Formats & Methodology

- Capacity Building Trainings & Conferences
- Simulations
- Dialogues
- Research



ASEFEdu Spreading Ideas

6 million

Reach on social media annually

43,000

Followers on Facebook

20,000

Newsletter subscribers

300,000

Unique viewers at our webpages annually

4,500

Network of Alumni of students and professionals

1,500+

Network of higher education experts and policy makers

ASEFEdu Partnerships

University Associations



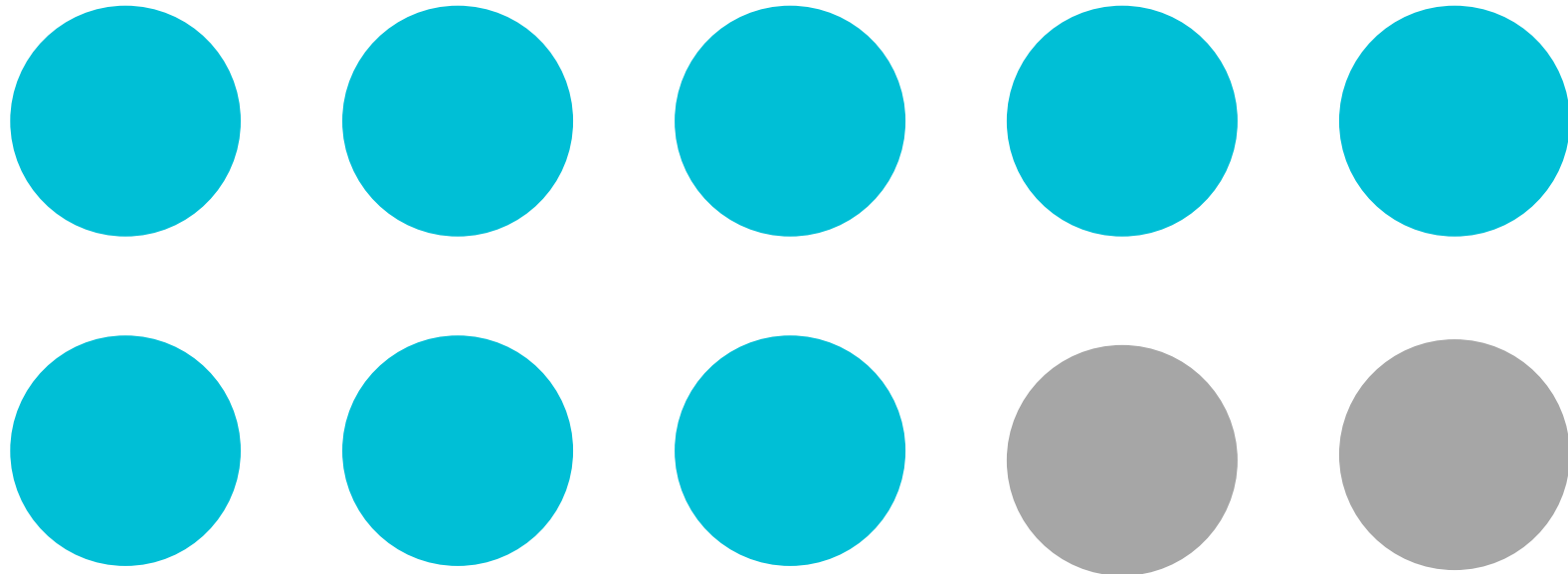
Student and Youth Associations



International organisations and networks



ASEFEdu Impact



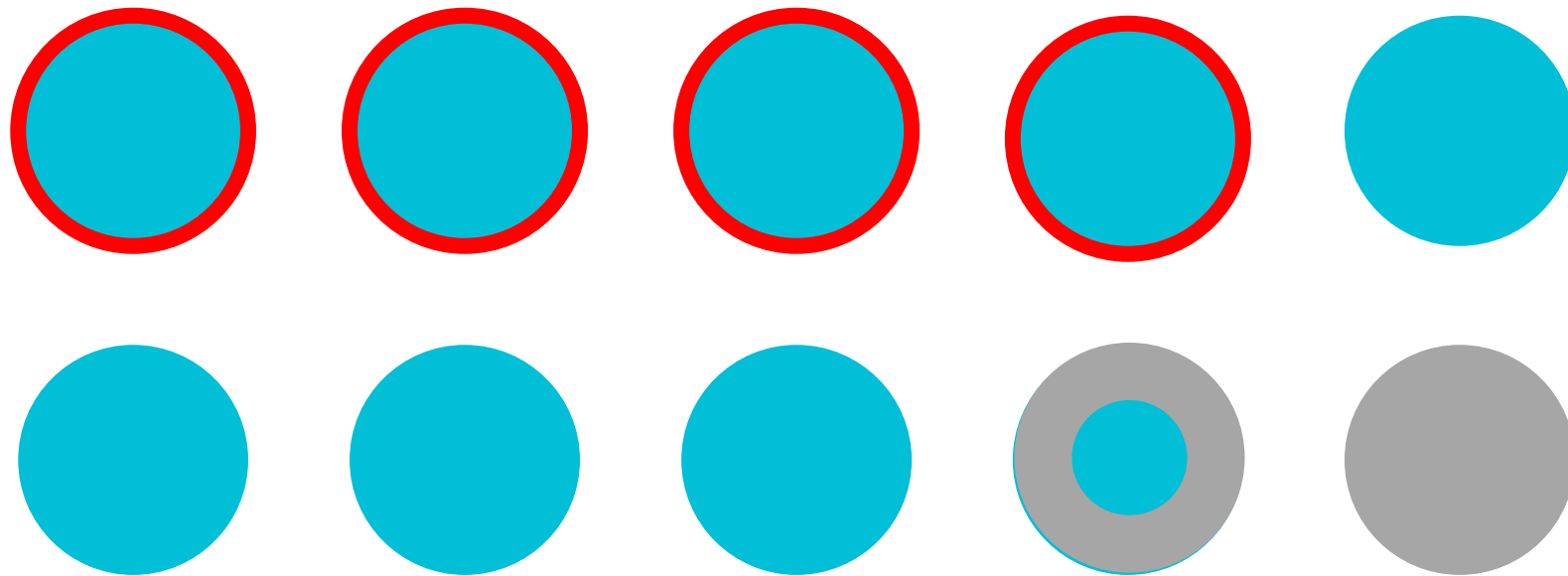
80%

of ASEFEdu Participants keep in touch with their peers

According to the results of the ASEFEdu Alumni Impact Survey



ASEFEdu Impact



4 out of 10

of ASEFEdu alumnus who keep in touch with their peers collaborate on a specific project

According to the results of the ASEFEdu Alumni Impact Survey



ASIA-EUROPE
FOUNDATION

We look forward to
collaborating with you!
#ASEFEdu www.asef.org